



**COCHISE COLLEGE**

**YOUR GUIDE  
TO GETTING STARTED**



# Who We Are

Cochise College is a public 2-year community college offering associate degrees, certificates and now two bachelor's degrees.



## PERSONAL ATTENTION = QUALITY INSTRUCTION

Class Size



Faculty-Student Ratio



## CAMPUS LIFE

26

Average Age

10,621

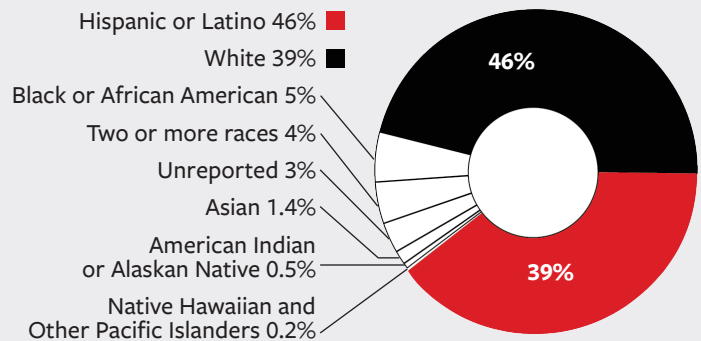
Total Students Served

*includes full-time, part-time,  
and Military Occupational (MOS)*

44%

First  
Generation

Demographics



## ATHLETICS

We have competitive athletic programs in:

Women's  
Soccer



Men's  
Baseball



Men's & Women's  
Basketball

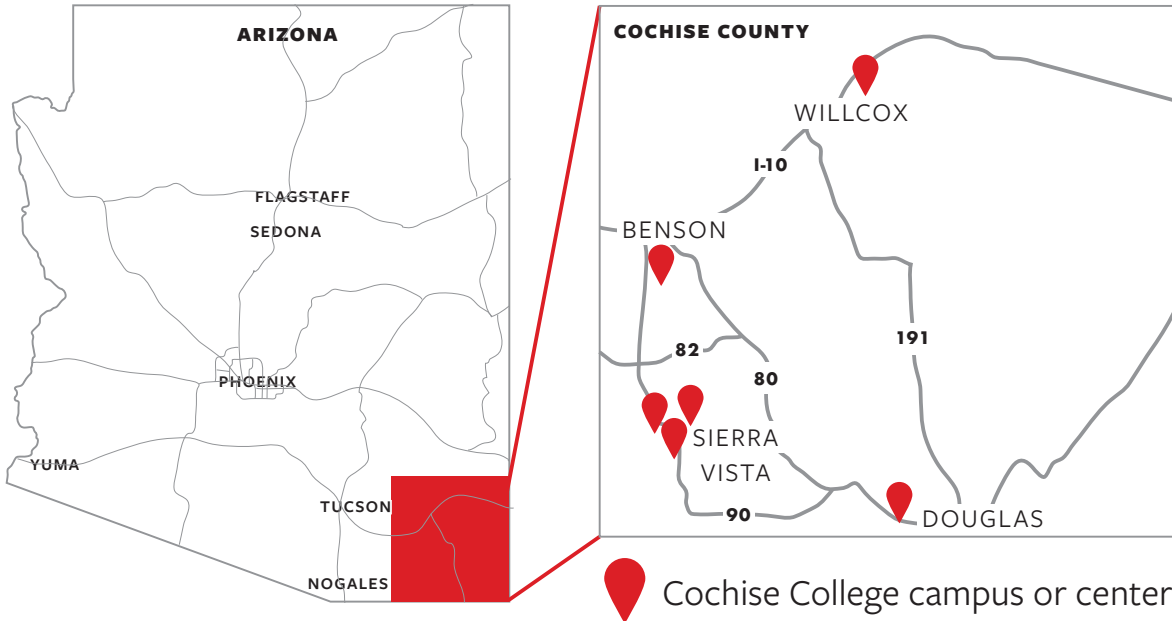


Men's & Women's  
Rodeo



# Locations

Benson Center • Downtown Center • Douglas Campus  
Fort Huachuca Center • Sierra Vista Campus • Willcox Center



## Willcox Center

FALL 2026 CLASSES



High School Equivalency (GED®)

English for Speakers of Other Languages (ESOL)

CPD 150 - Connections for Success

WLD 106 - Basic Shield Metal Arc Welding

*Check the schedule! Classes are subject to change.*

**WWW.COCHISE.EDU/SCHEDULE**

## Benson Center

FALL 2026 CLASSES



Mathematics (TBD)

Computer Information Systems (TBD)

ART 130A - Painting for Personal Development

ENG 101 - English Composition I

*Check the schedule! Classes are subject to change.*

**WWW.COCHISE.EDU/SCHEDULE**

# Cochise College New Student Checklist

## PRE-ADMISSION

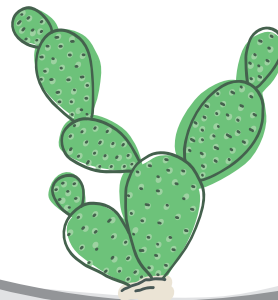
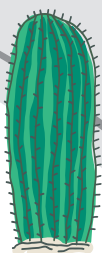
- Schedule a tour of a Cochise College campus (recommended)  
[www.cochise.edu/recruitment](http://www.cochise.edu/recruitment) | [recruitment@cochise.edu](mailto:recruitment@cochise.edu)
- Need help determining your academic path? Contact Academic Advising & Career Services or take a career assessment at  
[www.cochise.edu/advising](http://www.cochise.edu/advising)
- Complete the free college application online at  
[www.cochise.edu/apply](http://www.cochise.edu/apply)

## ADMISSION PROCESS

- Check your email for your acceptance letter containing your Cochise Student ID (C#) and username
- Activate your MyCochise portal account ([my.cochise.edu](http://my.cochise.edu)) using the instructions in your acceptance letter.
  - For account issues, contact the Technology Services help desk at (520) 515-5400.
- Send official transcripts to Admissions & Records:
  - High School - [adm@cochise.edu](mailto:adm@cochise.edu)
  - College - [eval@cochise.edu](mailto:eval@cochise.edu)Or mail to:  
Cochise College | Admissions & Records  
901 N. Colombo Ave. | Sierra Vista, AZ 85635-2317
- Verify your Identity
  - Submit a color-copy U.S. government-issued ID (e.g., AZ DL, military dependent ID, U.S. birth certificate) to [adm@cochise.edu](mailto:adm@cochise.edu) or in-person.  
*To qualify for in-state tuition, students must prove they have established residency 365 days prior to the start of classes.*  
*International students - please email [international@cochise.edu](mailto:international@cochise.edu) or call (520) 417-4050 for assistance | [www.cochise.edu/international-students](http://www.cochise.edu/international-students)*
- Visit a campus or center to obtain a student ID

## Fall Important Dates

Fall semester:  
August 17 - December 14  
1<sup>st</sup> 8-week session:  
August 17 - October 13  
2<sup>nd</sup> 8-week session:  
October 19 - December 14



## WAYS TO PAY FOR COLLEGE

- Complete the Free Application for Federal Student Aid (FAFSA) at [fasfa.gov](https://fasfa.gov) (Cochise College Code is 001072)
- Explore student worker opportunities at [www.cochise.edu/employment](https://www.cochise.edu/employment)
- Access Scholarship Universe in your MyCochise portal account

## PRE-REGISTRATION PROCESS

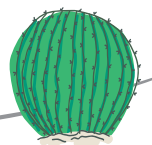
- Take Directed Self-Placement for English, Reading & Math [www.cochise.edu/dsp](https://www.cochise.edu/dsp)
- CNA/EMT/LPN students only: Contact Academic Advising & Career Services for placement eligibility requirements at [www.cochise.edu/advising](https://www.cochise.edu/advising)
- Meet with an Academic Advisor to create an academic plan and register for classes: [www.cochise.edu/advising](https://www.cochise.edu/advising)

## WHAT'S NEXT?

- Pay for courses or set up a payment plan through your MyCochise portal
- Order textbooks for classes (as applicable)
- Attend the new student orientation by visiting [www.cochise.edu/orientation](https://www.cochise.edu/orientation)
- Continue to check your college email account and the MyCochise portal

## FINANCIAL AID STUDENTS

- Check college email or the MyCochise portal for financial aid notifications
- Submit any additional requested documents to the Financial Aid office
- Set up direct deposit or payment plan through the Business Office
- Receive AWARD Letter from financial aid (by email or mail)



# Resources Available



## **ACCESSIBILITY SERVICES**

[www.cochise.edu/accessibility](http://www.cochise.edu/accessibility)  
[accessibility@cochise.edu](mailto:accessibility@cochise.edu)

The accessibility office empowers students with individual accommodation needs.



## **WELLNESS**

[www.cochise.edu/wellness](http://www.cochise.edu/wellness)  
[gladwilll@cochise.edu](mailto:gladwilll@cochise.edu)

Our wellness resources include the Cochise Cupboard food pantry, mental health counselors, teletherapy, and connection to wellness services in the community.



## **ACADEMIC ADVISING & CAREER SERVICES**

[www.cochise.edu/advising](http://www.cochise.edu/advising)  
[advising@cochise.edu](mailto:advising@cochise.edu)

Take a career assessment, explore career paths, and examine potential employment data with career services.



## **HELP DESK - TECHNOLOGY SERVICES**

[www.cochise.edu/help](http://www.cochise.edu/help)  
[helpdesk@cochise.edu](mailto:helpdesk@cochise.edu)

The help desk can help with the MyCochise portal, Moodle, MyDegreePlan and MyLabsPlus inquiries and password resets. Available 24/7. Email [cochise.edu/help](mailto:cochise.edu/help) or call (520) 515-5400.



## **BOOKSTORE**

[www.bkstr.com/cochisestore/home](http://www.bkstr.com/cochisestore/home)

Rent, buy, or price-match textbooks and digital textbooks from the bookstore or online through the MyCochise portal.



## **MIDDLE/HIGH SCHOOL STUDENTS:**

[www.cochise.edu/early-college](http://www.cochise.edu/early-college)

## **ACTIVE DUTY MILITARY, SPOUSES AND DEPENDENTS:**

[www.cochise.edu/military](http://www.cochise.edu/military) or visit the Fort Huachuca Army Education Center.

## **PERSONAL DEVELOPMENT:**

[www.cochise.edu/cll](http://www.cochise.edu/cll)

## **JOB & WORKFORCE TRAINING:**

[www.cochise.edu/skills](http://www.cochise.edu/skills)



# Student Life



## STUDENT LIFE & EVENTS

[www.cochise.edu/events](http://www.cochise.edu/events)

Student life organizations hold a variety of campus events and activities throughout the school year. Make friends, have fun, and get involved!



## STUDENT GOVERNMENT ASSOCIATION (SGA)

[www.cochise.edu/sga](http://www.cochise.edu/sga)

The SGA at Cochise College represents students, organizes events, promotes school spirit, and ensures students have a voice in campus decisions. Apply to serve as an officer or get involved as an active member of SGA.



## RESIDENCE LIFE/HOUSING

[www.cochise.edu/housing](http://www.cochise.edu/housing)

Full-time students, enrolled in a minimum of 12 credits per semester are eligible to join our housing community on the Douglas and Sierra Vista campuses and take advantage of all Residence Life has to offer.



## STUDENT CLUBS

[www.cochise.edu/clubs](http://www.cochise.edu/clubs)

Cochise College offers exciting student clubs, each offering unique opportunities to explore new interests and connect with others. Make a difference today by getting involved!



SIERRA VISTA  
CAMPUS

## Bugen Hall

OUR NEWEST  
STUDENT  
HOUSING

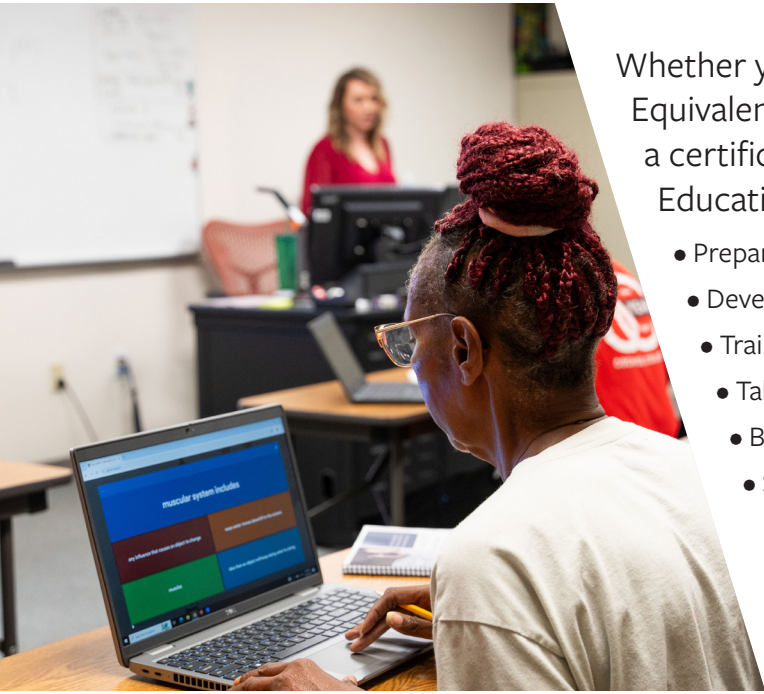
Kyle Zirkus Photography

Cochise College has this sense of welcoming. Everyone here is just willing to learn from each other and it's a really good environment to learn. It's peaceful, it's beautiful, and I couldn't ask for more.

– EDUARDO SOTO  
PRE-NURSING STUDENT



# Adult Education



Whether you're working toward your High School Equivalency (HSE) or building the skills to start college, earn a certificate, or get a better job—Cochise College Adult Education is here for you. You can:

- Prepare for the GED® Exams
- Develop and practice your English skills
- Train for in-demand careers
- Take your first college class
- Build workplace and life skills
- Study in supportive, flexible classes

[www.cochise.edu/adult-education](http://www.cochise.edu/adult-education)

## English for Speakers of Other Languages (ESOL)

Our English for Speakers of Other Languages (ESOL) program is the perfect option for students of beginner or intermediate levels who desire to improve their English speaking ability. This program prepares students for success in their career and academic goals. Students who complete this program often move on to:

- High School Equivalency Classes
- College-Level English as a Second Language Classes
- Other college programs

Nuestro programa de Inglés para Hablantes de Otros Idiomas (ESOL) es la opción perfecta para estudiantes de nivel principiante o intermedio que desean mejorar su habilidad para hablar inglés. Este programa prepara a los estudiantes para el éxito en sus metas profesionales y académicas. Los estudiantes que completen este programa podrán pasar a:

- Clases de equivalencia de escuela secundaria
- Clases de inglés a nivel universitario como segundo idioma
- Otros programas universitarios

[www.cochise.edu/adult-education](http://www.cochise.edu/adult-education)

# Paying for College

**Cochise College offers many different ways to pay for college, including financial aid, scholarships, and payment plans.**

## HOW MUCH DOES IT COST?

In addition to tuition and on-campus housing, many courses require additional fees to cover costs associated with the courses; each program will have differing fees. For a complete list of in-state and out-of-state tuition and fees for each program and course, visit [www.cochise.edu/tuition](http://www.cochise.edu/tuition).

## FINANCIAL AID

[www.cochise.edu/fa](http://www.cochise.edu/fa) | [finaid@cochise.edu](mailto:finaid@cochise.edu)  
All students seeking financial aid and/or scholarships will need to fill out the FAFSA, follow the rules and procedures associated with FAFSA and maintain satisfactory progress.

## MILITARY STUDENTS

[www.cochise.edu/military](http://www.cochise.edu/military)  
[ftuachuca@cochise.edu](mailto:ftuachuca@cochise.edu)  
Military students can contact an advisor at our Fort Huachuca Center.

## SONORAN STUDENT EXCHANGE PROGRAM FOR AGUA PRIETA, SONORA, MEXICO

[www.cochise.edu/tuition](http://www.cochise.edu/tuition)  
Cochise College and the Instituto Tecnológico de Agua Prieta (ITAP) have an agreement in which students can pay Arizona resident tuition rates. Please contact the Admissions Office: (520) 417-4005, (520) 417-4050, or [cochise.edu/tuition](http://cochise.edu/tuition). Tuition applications are available for students from Sonora, Mexico through an agreement between the Arizona-Mexico Commission. Visit [azmc.org](http://azmc.org).

## PAYMENT PLAN

[www.cochise.edu/payment](http://www.cochise.edu/payment)  
Cochise College offers interest-free payment plans. Enroll in a payment plan online – it's secure and easy! Payments are made monthly. For Payment Plan assistance, contact the Business Office: (520) 515-5416 or visit the Student Union – 1000 Building, Sierra Vista campus.

## SCHOLARSHIPS

[www.cochise.edu/scholarships](http://www.cochise.edu/scholarships)  
The Cochise College Foundation offers scholarships and grants for our students. Many of these scholarships are not solely based on family income, but rather on academic performance and major. Qualification criteria include financial need, academic performance, program of study, or some combination of qualifications specified by donors.



# Degrees & Certificates

Our academic programs include associate degrees and certificates that lead to exciting careers.  
For the most recent listing, visit [www.cochise.edu/degrees](http://www.cochise.edu/degrees)

| AREAS OF STUDY   | CERTIFICATE | AAS | TRANSFER |
|--|-------------|-----|----------|
| <b>ARTS &amp; HUMANITIES</b>   |             |     |          |
| Arizona General Education Curriculum   | ●           |     |          |
| Digital Media Arts   |             | ●   |          |
| Fine Arts  |             |     | ●        |
| General Studies  |             |     | ●        |
| Liberal Studies <i>Choose a concentration in Communication, English, Humanities, Journalism, or Philosophy</i> |             |     | ●        |
| Music  |             |     | ●        |

**\*These certificates can be completed in one year or less**

**AAS** refers to an associate of applied science degree, which is a direct employment degree with transfer possibilities.

|   | CERTIFICATE | AAS | TRANSFER |
|---|-------------|-----|----------|
| <b>AVIATION</b>   |             |     |          |
| Professional Pilot Technology <i>Choose a concentration in Airline Career, Flight Instructor, or Multi-Engine</i> |             | ●   |          |

**TRANSFER** refers to an associate of arts, associate of science, or associate of business degree that may transfer without loss of credit to many four-year colleges and universities, including Arizona State University, Northern Arizona University, and the University of Arizona.

|  | CERTIFICATE | AAS | TRANSFER |
|--|-------------|-----|----------|
| <b>BEHAVIORAL SCIENCES &amp; HUMAN SERVICES</b>  |             |     |          |
| Administration of Justice  |             |     | ●        |
| Communications Officer*  | ●           |     |          |
| Early Childhood Care & Education*  | ●           | ●   | ●        |
| Elementary Education   |             |     | ●        |
| Paraeducator*  | ●           |     |          |
| Social & Behavioral Sciences <i>Choose a concentration in Anthropology, History, Political Science, Psychology, or Sociology</i> |             |     | ●        |

**BAS** refers to a bachelor of applied science degree, which is an undergraduate academic degree with direct employment potential.

|   | CERTIFICATE | AAS | TRANSFER |
|---|-------------|-----|----------|
| <b>BUSINESS</b>                             |             |     |          |
| Business Administration                     |             |     | ●        |
| Business Management                         |             | ●   |          |
| Digital Marketing for Business*             | ●           |     |          |
| Entrepreneurship/Small Business Management* | ●           |     |          |
| Tax Preparer*                               | ●           |     |          |

|  | CERTIFICATE | AAS | TRANSFER |
|--|-------------|-----|----------|
| <b>COMPUTER TECHNOLOGY</b>   |             |     |          |
| <b>Computer Information Systems</b>  |             |     |          |
| Computer Information Systems   |             | ●   |          |
| Computer Programming <i>Choose a concentration in Programming or Virtual Reality Development</i> |             | ●   |          |
| Computer Science   |             |     | ●        |
| <b>Cybersecurity</b>   |             |     |          |
| Cybersecurity  |             | ●   |          |
| Linux System Administrator   | ●           |     |          |
| <b>Virtual Reality</b>   |             |     |          |
| Virtual Reality Content Developer*   | ●           |     |          |

## DEGREES & CERTIFICATES

| AREAS OF STUDY                | CERTIFICATE | AAS | TRANSFER |
|-------------------------------|-------------|-----|----------|
| <b>FIRST RESPONDERS</b>       |             |     |          |
| Emergency Medical Technician* | ●           |     |          |
| Fire Science Technology*      | ●           | ●   |          |
| Law Enforcement*              | ●           | ●   |          |
| Paramedicine                  | ●           | ●   |          |

**\*These certificates can be completed in one year or less**

| HEALTH SCIENCES   | CERTIFICATE | AAS | TRANSFER |
|---|-------------|-----|----------|
| <b>Allied Health</b>  |             |     |          |
| Allied Health   |             |     | ●        |
| Behavioral Health Sciences - Basic*                                   | ●           |     |          |
| Behavioral Health Sciences - Advanced*                                | ●           |     |          |
| Dental Assistant*   | ●           |     |          |
| Electrocardiogram (EKG) Technician*                                   | ●           |     |          |
| Exercise Science, Health, Physical Education, Recreation and Wellness |             |     | ●        |
| Home Health Aide*   | ●           |     |          |
| Medical Assistant*  | ●           |     |          |
| Medical Billing & Coding*   | ●           |     |          |
| Phlebotomy Technician*  | ●           |     |          |
| <b>Nursing</b>  |             |     |          |
| Nursing Assistant (CNA)*  | ●           |     |          |
| Nursing   |             | ●   |          |
| Practical Nursing (LPN)   | ●           |     |          |

| INDUSTRY & CAREER TECHNICAL EDUCATION  | CERTIFICATE | AAS | TRANSFER |
|--|-------------|-----|----------|
| <b>Automotive</b>  |             |     |          |
| Automotive Fundamentals*   | ●           |     |          |
| Automotive Technology*   | ●           | ●   |          |
| Light Vehicle Diesel*  | ●           |     |          |
| <b>Building &amp; Construction</b>   |             |     |          |
| Heating, Ventilation, and Air Conditioning (HVAC)  | ●           |     |          |
| Residential Construction Technology*   | ●           | ●   |          |
| <b>Computer-Aided Drafting</b>   |             |     |          |
| Computer-Aided Drafting  | ●           |     |          |
| General Computer-Aided Drafting*   | ●           |     |          |
| <b>Culinary Arts</b>   |             |     |          |
| Culinary Arts  | ●           |     |          |
| Culinary Baking & Pastry*  | ●           |     |          |
| Culinary Fundamentals*   | ●           |     |          |
| Culinary Skills*   | ●           |     |          |
| <b>Welding</b>   |             |     |          |
| Welding Certificates in Aerospace Welding Technology, General Welding Technology, D.1. SMAW, D1.1 FCAW/GMAW, Welding Fundamentals, Welding Motorsports, Welding Pipe and Fitting | ●           |     |          |
| Welding Technology   |             | ●   |          |

| MILITARY PROGRAMS                        | CERTIFICATE | AAS | TRANSFER |
|--|-------------|-----|----------|
| Intelligence Operations Studies          |             | ●   |          |
| Military Intelligence Systems Technician |             | ●   |          |
| Unmanned Aerial Vehicle Flight Operator  |             | ●   |          |
| Unmanned Aircraft Systems Technician     |             | ●   |          |

## DEGREES & CERTIFICATES

| AREAS OF STUDY   | CERTIFICATE | AAS | TRANSFER |
|--|-------------|-----|----------|
| <b>SCIENCE, TECHNOLOGY, ENGINEERING &amp; MATH</b>   |             |     |          |
| <b>Agriculture and Animal Science</b>  |             |     |          |
| Animal Science*  | ●           | ●   |          |
| Crop Science   |             | ●   |          |
| <b>Biology, Chemistry &amp; Physics</b>  |             |     |          |
| Biology <i>Choose a concentration in Biological Sciences, Ecology &amp; Evolutionary Biology, Human Biology, or Microbiology</i> |             |     | ●        |
| Chemistry  |             |     | ●        |
| Physics  |             |     | ●        |
| <b>Engineering</b>   |             |     |          |
| Engineering  |             |     | ●        |
| <b>Mathematics</b>   |             |     |          |
| Mathematics  |             |     | ●        |
| <b>Technology</b>  |             |     |          |
| Computer Science   |             |     | ●        |

**\*These certificates can be completed in one year or less**

**BAS** refers to a bachelor of applied science degree, which is an undergraduate academic degree with direct employment potential.

|   | CERTIFICATE                     | AAS | TRANSFER |
|---|---------------------------------|-----|----------|
| <b>WORKFORCE TRAINING</b>                   |                                 |     |          |
| Amazon Web Services Cloud Architecting*     | ●                               |     |          |
| Amazon Web Services Cloud Foundations*      | ●                               |     |          |
| Commercial Driver's License (CDL) Training* | ●                               |     |          |
| <b>OTHER EDUCATIONAL OPPORTUNITIES</b>      |                                 |     |          |
| Adult Education                             | www.cochise.edu/adult-education |     |          |
| Center for Lifelong Learning                | www.cochise.edu/cll             |     |          |
| Dual Enrollment                             | www.cochise.edu/early-college   |     |          |
| English as a Second Language                |                                 |     |          |

|  |  |  |  |
|--|--|--|--|
| <b>Bachelor's Degrees</b>  |  |  |  |
| Registered Nurse to Bachelor of Science in Nursing (RN to BSN)           |  |  |  |
| Leadership, Management, and Operations Bachelor of Applied Science (BAS) |  |  |  |



# Program Spotlights



**Now offering**

## Bachelor's Degrees

### **Registered Nurse to Bachelor of Science in Nursing (RN to BSN)**

This program is ideal for Registered Nurses who want to expand their knowledge base, increase job security, and enjoy greater career mobility.

### **Leadership, Management, and Operations Bachelor of Applied Science (BAS)**

Offers students a detailed exploration of the operations of a business organization through the development of operational skills, management techniques, and leadership ability.

[cochise.edu/bachelors-degree-info](http://cochise.edu/bachelors-degree-info)

## Early Childhood Care & Education

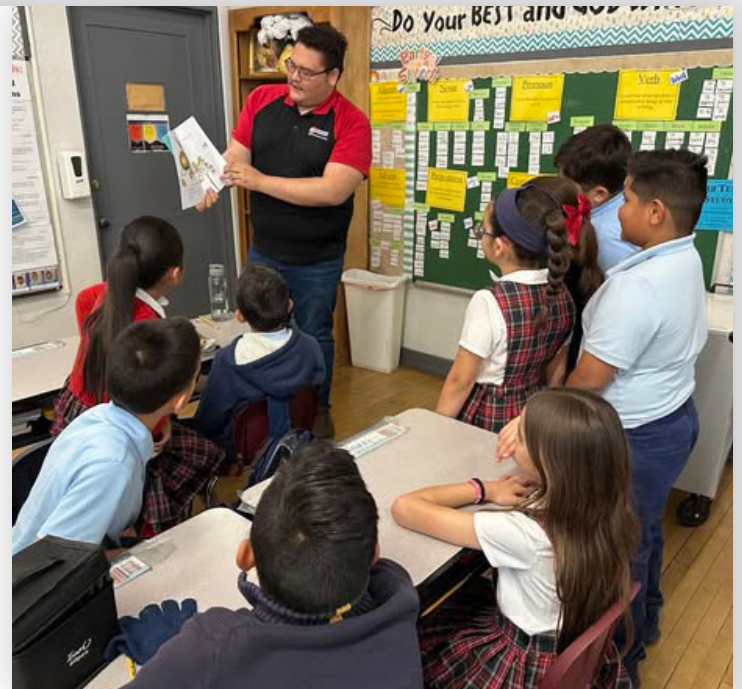
Love working with young ones? This program offers in-depth child development theory, practical applications in the workplace, and comprehensive skills for working with children and their families.

## Elementary Education

If you are interested in working in a K-12 school setting, this program is for you. You will become familiar with the foundations of education, culturally relevant pedagogy, and classroom management.

Create your future—and theirs!

[info@cochise.edu](mailto:info@cochise.edu)  
[cochise.edu/education](http://cochise.edu/education)



## Program Spotlights

# Cochise College Foundation

The Cochise College Foundation provides students each year with scholarships to support them in their academic career. We foster higher education in Cochise County while creating brighter futures for generations of students.

*“Thanks to this support, I was able to continue my education. As an older student, I was intimidated to return to school, but Cochise College has been amazing—welcoming, warm, and encouraging every step of the way. The staff truly go the extra mile. I feel embraced, and for that, I’m deeply grateful. Kudos to Cochise!”*

**- BOLANILE RICHARDSON, BEHAVIORAL HEALTH SCIENCES**

BolaniLe received the Major E.L. Suzie Walker USA ASA (ret.) Scholarship through the Cochise College Foundation.

 COCHISE COLLEGE FOUNDATION | [cochise.edu/give](https://cochise.edu/give)



# Program Spotlights

## Small Business Development Center

### NETWORKING & WORKSHOPS

#### Business Coffee Hour

Network with local business owners, founders, and the SBDC team. Swap ideas, make connections and grow your business over coffee. First Thursdays at 10 a.m.

#### Biz 101

Learn the building blocks of business success using the Business Model Canvas: Value Proposition, Customer Segments, Customer Channels, Revenue Streams, and more.

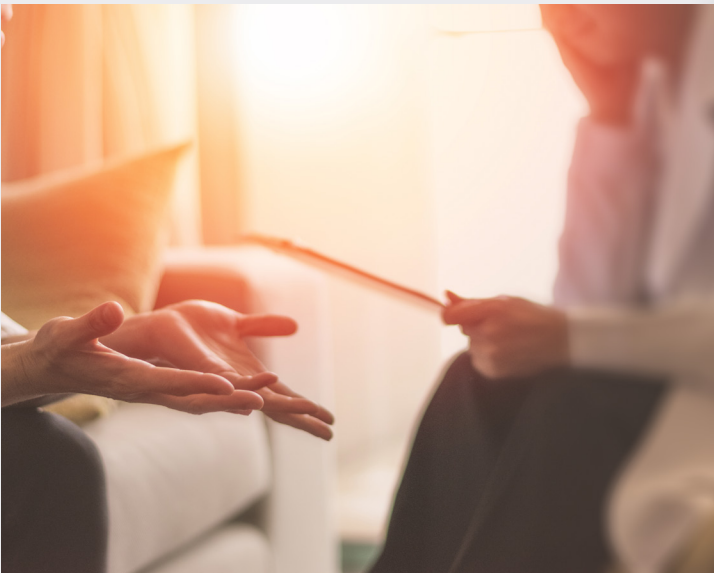
**More information:**  
[cochise.edu/sbdc](http://cochise.edu/sbdc)



## Behavioral Health Sciences

Mental healthcare workers are in high demand in Cochise County. Make a difference locally by assisting in the care of patients and families dealing with mental illness, and create your future in behavioral healthcare this fall!

[info@cochise.edu](mailto:info@cochise.edu)  
[cochise.edu/bhs](http://cochise.edu/bhs)





# COCHISE COLLEGE

## Campus/Center Locations

**BENSON CENTER • DOUGLAS CAMPUS • DOWNTOWN CENTER • FORT HUACHUCA CENTER**

**SIERRA VISTA CAMPUS • WILLCOX CENTER**

(800) 593-9567 | [cochise.edu](http://cochise.edu)

## Student Resources Contact Information

---

**COCHISE COLLEGE OPERATOR** • 1-800-966-7943

**CONTACTO PARA ESPAÑOL** • (520) 417-4050

**ACADEMIC ADVISING & CAREER SERVICES** • Sierra Vista (520) 515-5484 | Douglas (520) 417-4038 | [advising@cochise.edu](mailto:advising@cochise.edu)

**ACCESSIBILITY SERVICES** • (520) 515-5337 | [accessibility@cochise.edu](mailto:accessibility@cochise.edu)

**ADMISSIONS/RECORDS/REGISTRATION** • Sierra Vista (520) 515-5336 | Douglas (520) 417-4005 | [adm@cochise.edu](mailto:adm@cochise.edu)

**ADULT EDUCATION** • (520) 515-5456 | (520) 439-6832 (ESPAÑOL) | [adulthoodeducation@cochise.edu](mailto:adulthoodeducation@cochise.edu)

**BENSON CENTER** • (520) 586-1981 | [benson@cochise.edu](mailto:benson@cochise.edu)

**BUSINESS OFFICE/CASH OFFICE** • (520) 515-5416 | [SVBO@cochise.edu](mailto:SVBO@cochise.edu)

**CAMPUS BOOKSTORE** • [www.bkstr.com/cochisestore/home](http://www.bkstr.com/cochisestore/home)

**FINANCIAL AID** • (520) 515-5417 | [finaid@cochise.edu](mailto:finaid@cochise.edu)

**HELP DESK/TECHNOLOGY REQUESTS** • (520) 515-5400 | [helpdesk@cochise.edu](mailto:helpdesk@cochise.edu)

**HOUSING** • (520) 417-4062 | [housing@cochise.edu](mailto:housing@cochise.edu)

**LIBRARIES** • (520) 515-5320 | [library@cochise.edu](mailto:library@cochise.edu)

**MYDEGREEPLAN** • [mydegreeplan@cochise.edu](mailto:mydegreeplan@cochise.edu)

**TESTING CENTERS** • (520) 515-5447 | [testing@cochise.edu](mailto:testing@cochise.edu)

**TRANSFER CREDITS AND PRIOR LEARNING ASSESSMENT** • (520) 452-2657 | [eval@cochise.edu](mailto:eval@cochise.edu)

**TUTORING AND LEARNING CENTERS** • (520) 515-5342 | [stemlab@cochise.edu](mailto:stemlab@cochise.edu) | [writinglab@cochise.edu](mailto:writinglab@cochise.edu)

**WILLCOX CENTER** • (520) 384-4502 | [willcox@cochise.edu](mailto:willcox@cochise.edu)

FOLLOW COCHISE COLLEGE ON SOCIAL MEDIA

